



REGIONE PIEMONTE
 PROVINCIA DI NOVARA
 COMUNE DI TERDOBBIATE



PROGETTO DEFINITIVO/ESECUTIVO

**LAVORI DI MESSA IN SICUREZZA EDIFICI
 COMUNALI - RIFACIMENTO COPERTURE**



Allegato n.

01

**INQUADRAMENTO-ELABORATI GRAFICI
 EDIFICIO POSTALE, MAGAZZINO
 SPOGLIATOI CAMPO SPORTIVO**

| Rev. | Data | Note | Redatto | Controllato | Approvato |
|-----------------|------------|-------------------------------|-------------|---------------|-----------|
| 0 | 06.05.2022 | EMISSIONE | A.F. | A.G. | A.G. |
| 1 | | | | | |
| <i>Commessa</i> | | 01_TERDO_22 | <i>Fase</i> | PROGETTAZIONE | |
| <i>Località</i> | | VIA ROMA 1 - TERDOBBIATE (NO) | | <i>Scala</i> | / |

Progettista

ANTONIO GRANDI INGEGNERE

Sede Via Monte Nero 10/C - 27020 Tromello (PV)

tel +39 0382 1758633

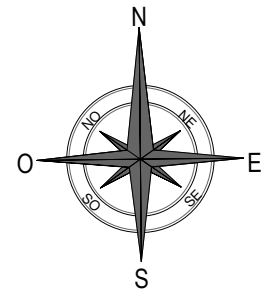
PEC antonio.grandi@pec.ording.pv.it

ANTONIO GRANDI INGEGNERE

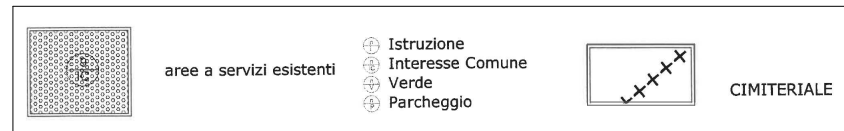
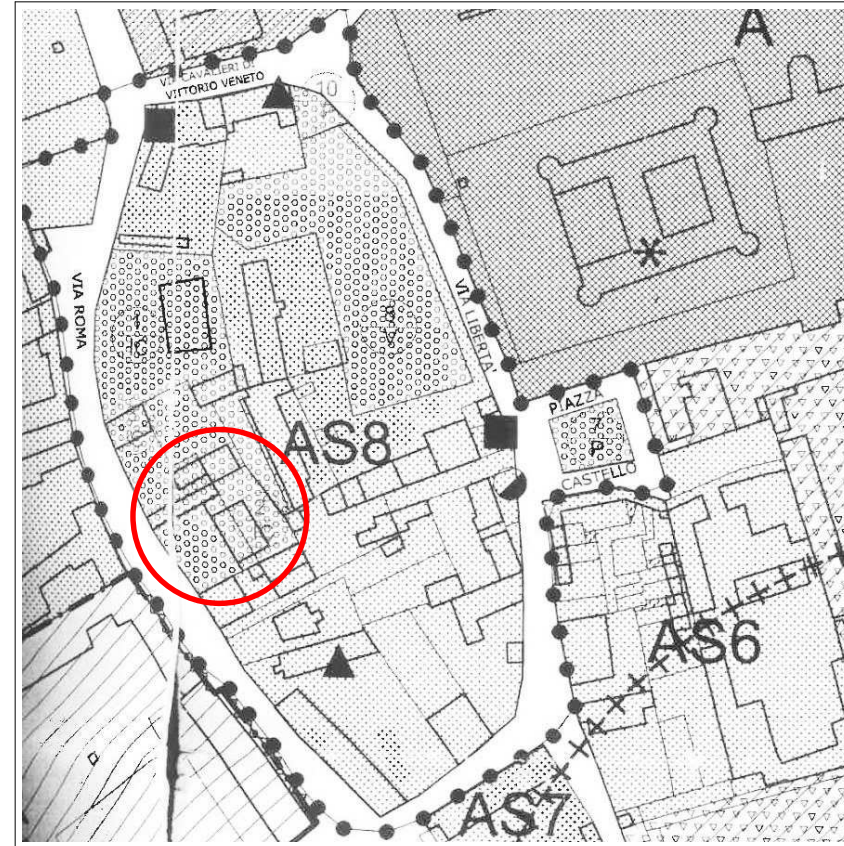
PROGETTISTA RESPONSABILE: ing. Antonio Grandi

IL RUP: geom. Cristina Dondi

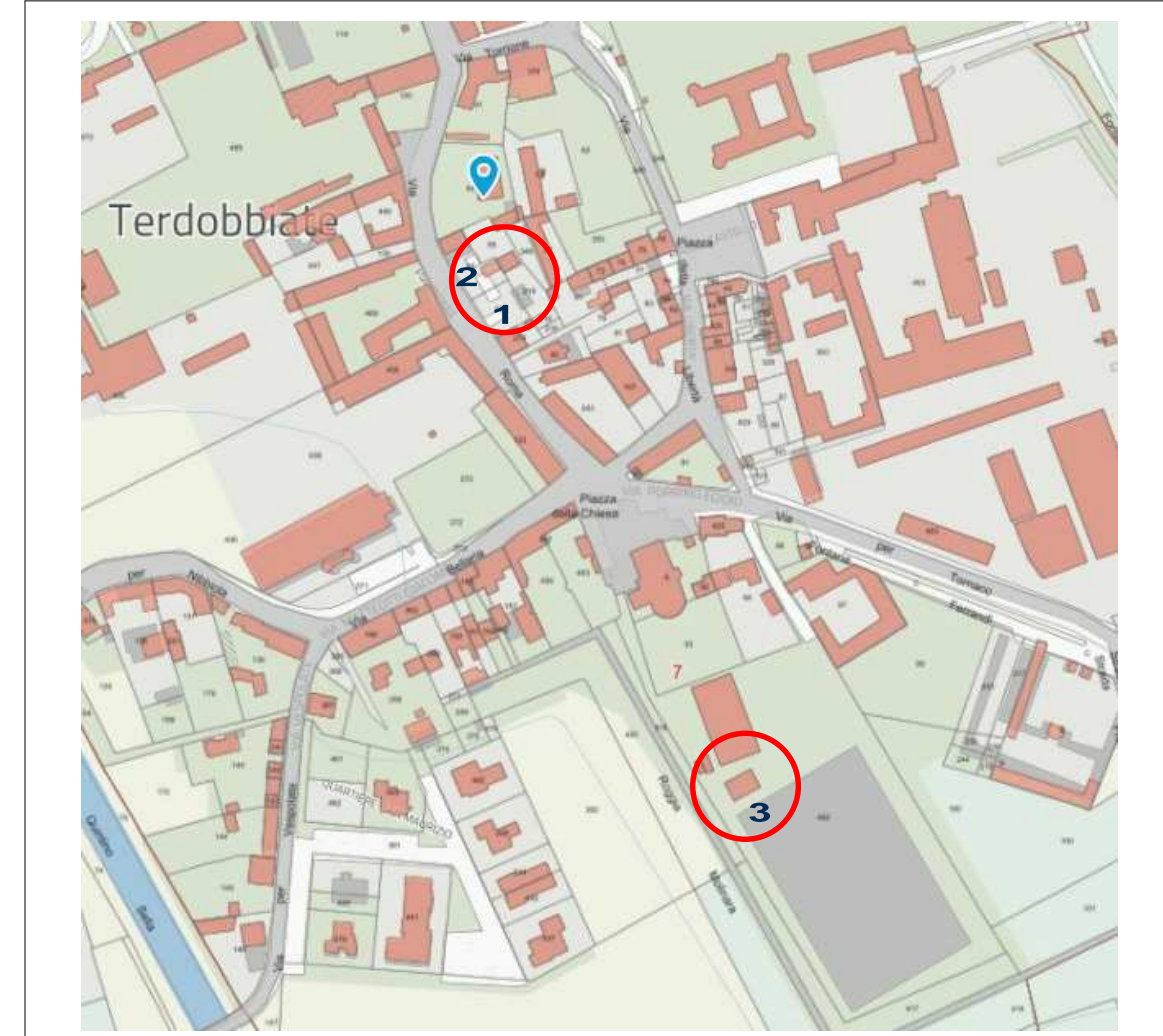
ESTRATTI MAPS



ESTRATTI P.R.G.C.

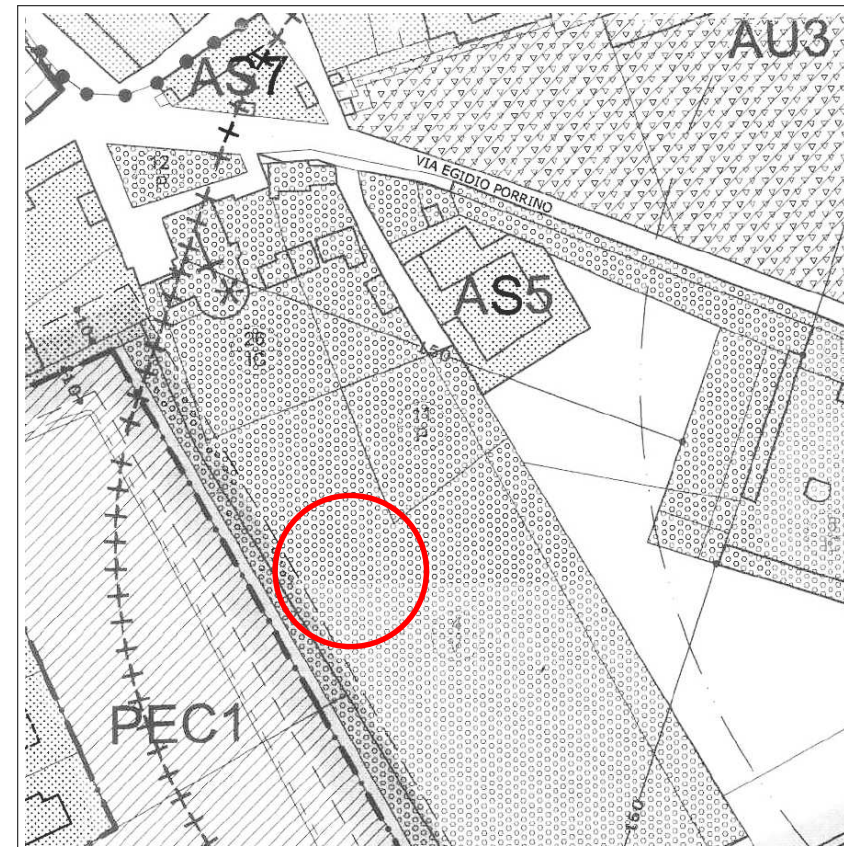


ESTRATTI P.R.G.C.



Edificio Postale e Magazzino

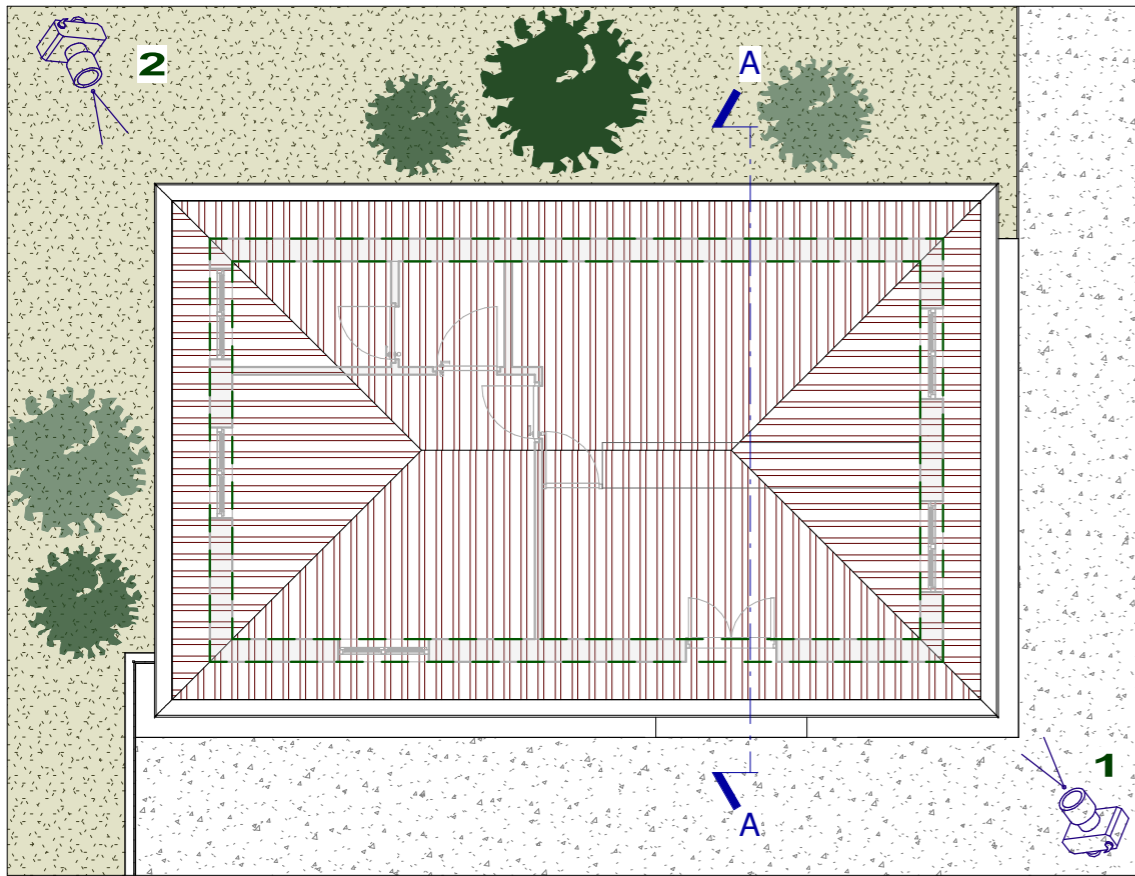
Spogliatoi campo sportivo



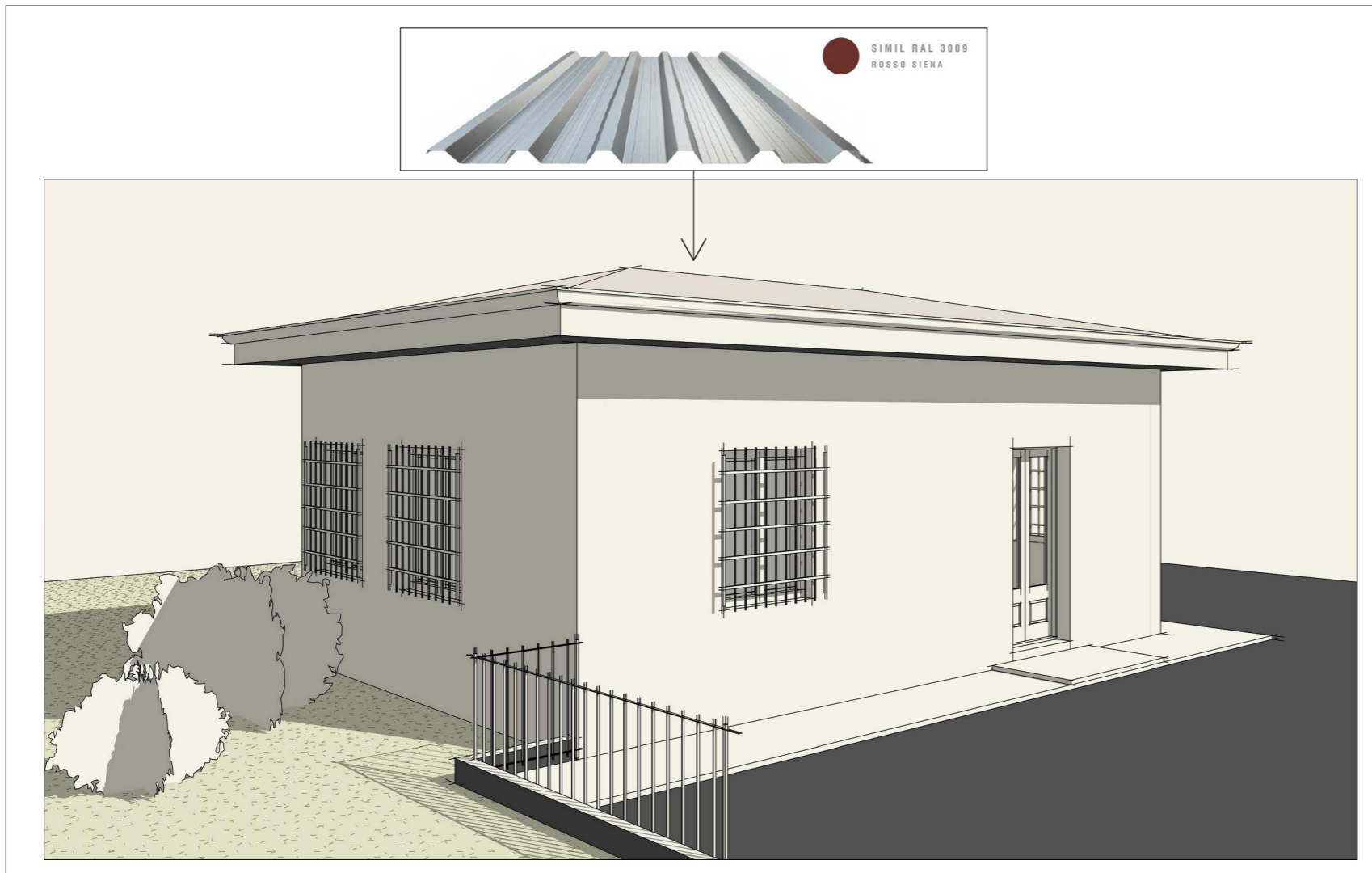
DOCUMENTAZIONE FOTOGRAFICA



PIANTA COPERTURA



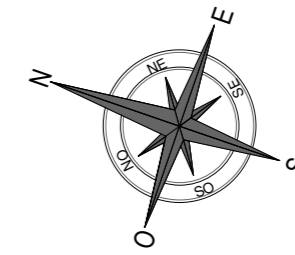
VISTA PROSPETTICA



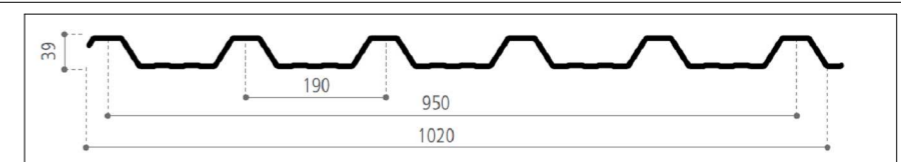
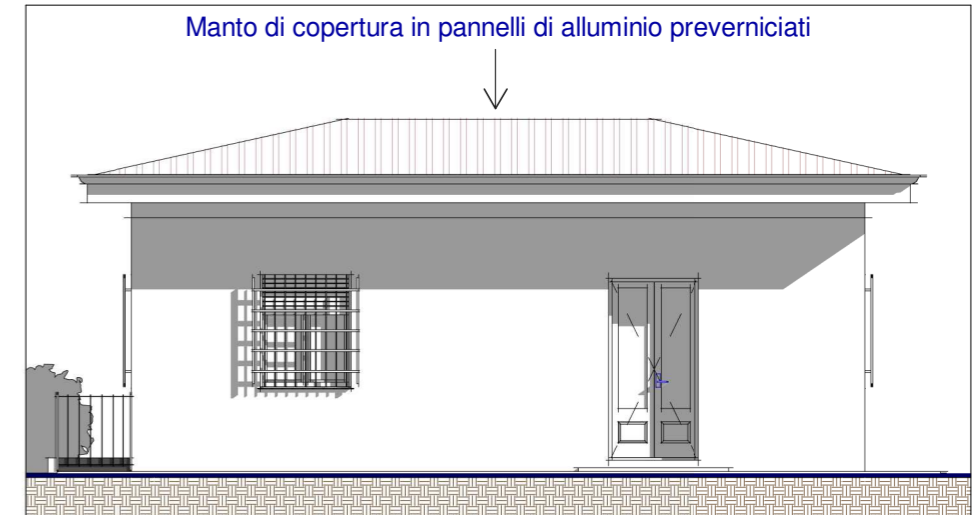
FOTOGRAFIA 1



FOTOGRAFIA 2

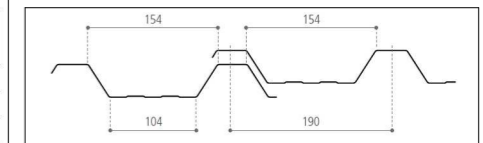


PROSPETTO VERSO STRADA

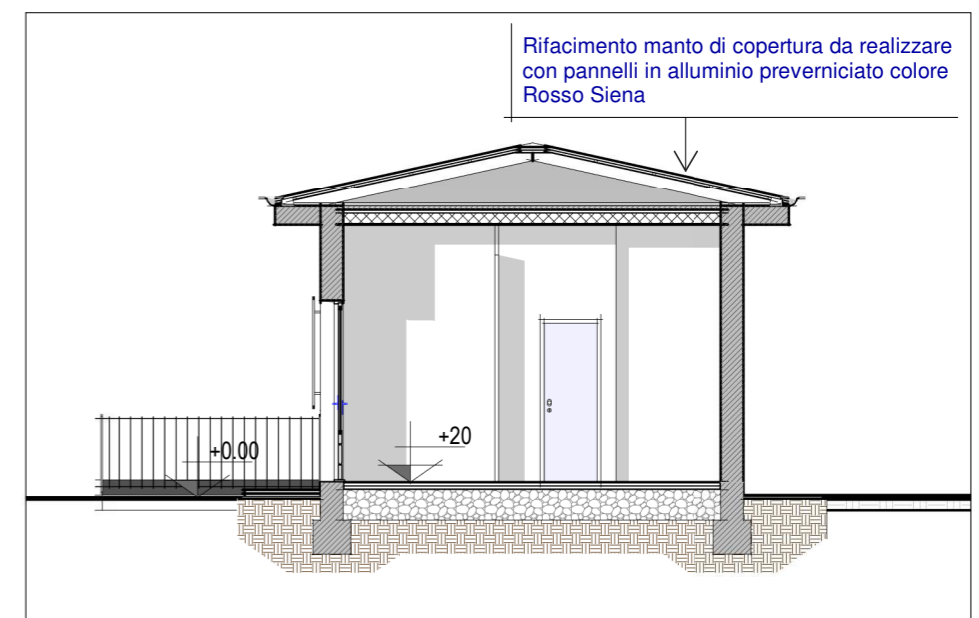


Caratteristiche tecniche alluminio

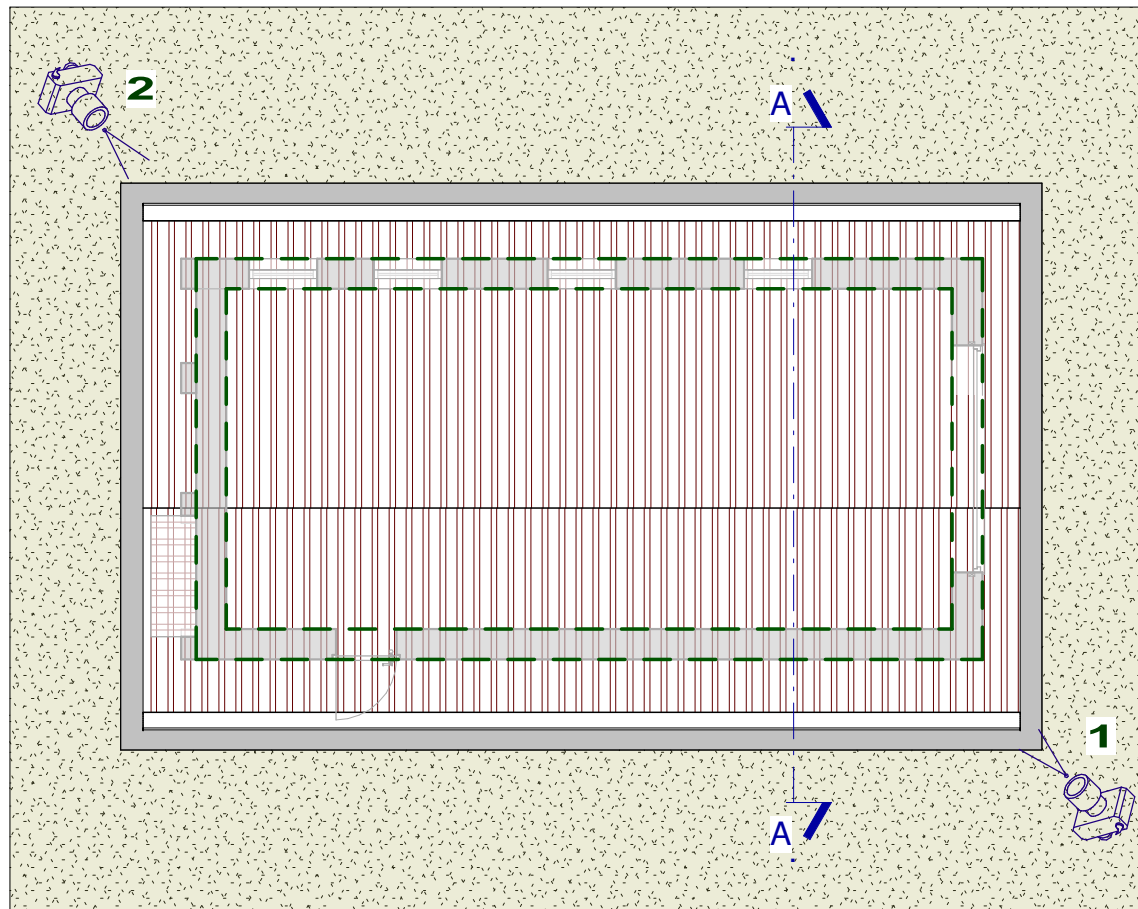
| s | p | J | W | EJ | M max |
|------|----------------------|----------------------|----------------------|-------------------------|-----------|
| [mm] | [kg/m ²] | [cm ² /m] | [cm ² /m] | [kN cm ² /m] | [kN cm/m] |
| 0,6 | 1,99 | 17,61 | 6,21 | 123.270 | 40 |
| 0,7 | 2,32 | 20,55 | 7,21 | 143.850 | 47 |
| 0,8 | 2,65 | 23,49 | 8,21 | 164.430 | 53 |
| 1,0 | 3,31 | 29,36 | 10,18 | 205.520 | 66 |



SEZIONE A - A



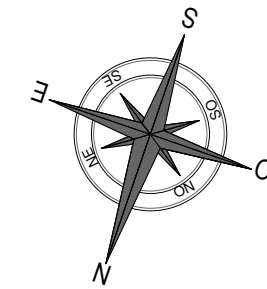
PIANTA COPERTURA



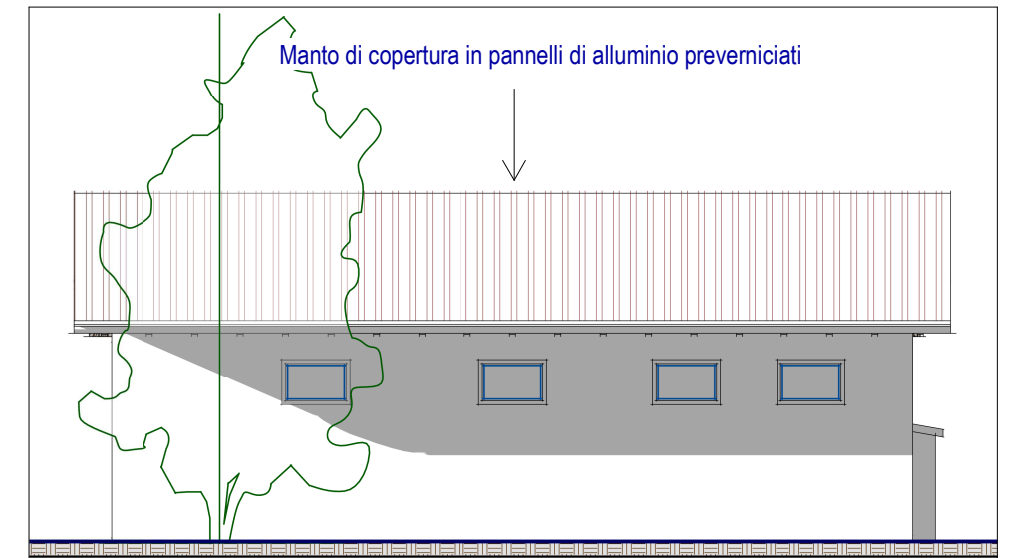
FOTOGRAFIA 1



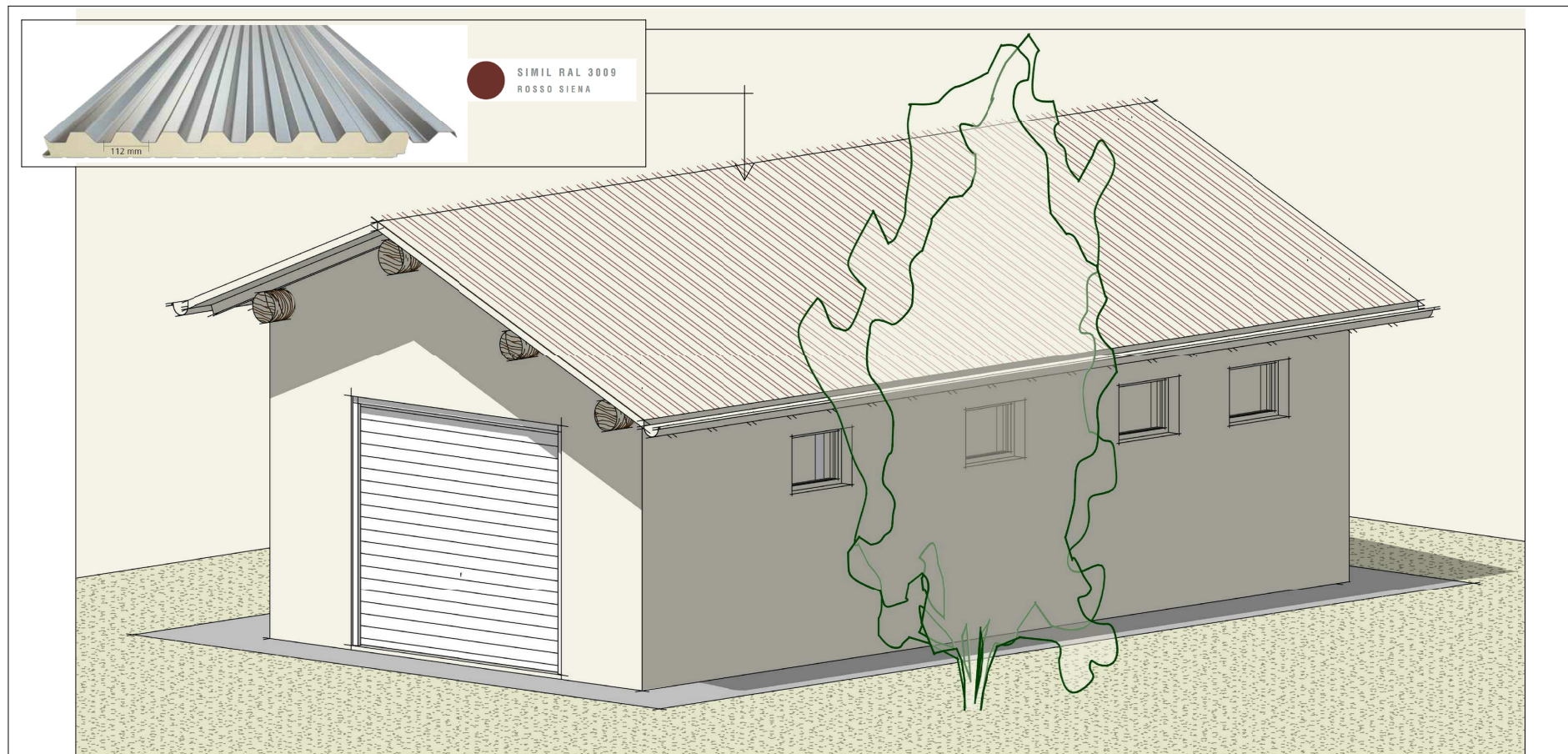
FOTOGRAFIA 2



PROSPETTO LATERALE



VISTA PROSPETTICA

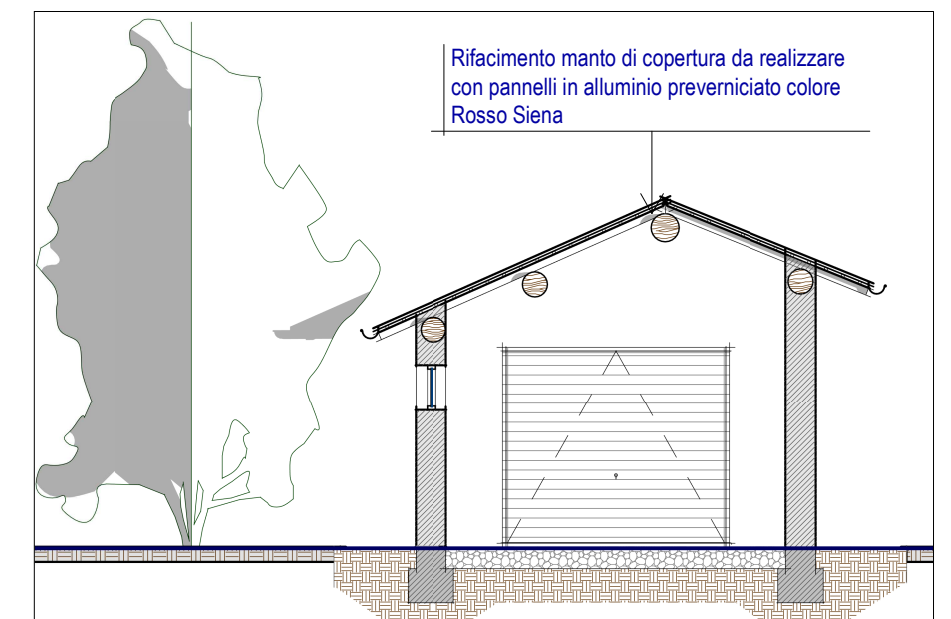


Isolamento termico / Insulation

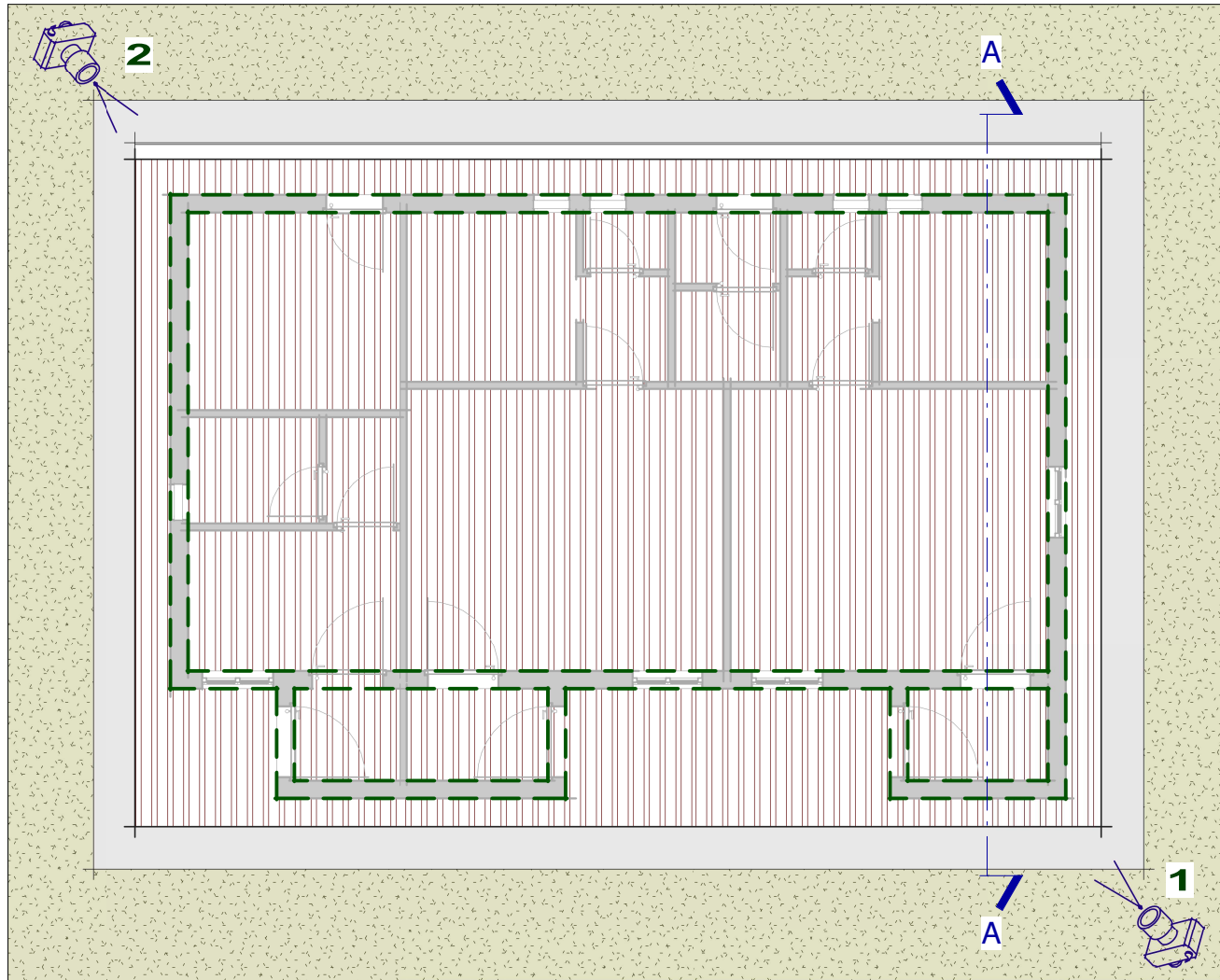
| U | Spessore Pannello / Panel Thickness (mm) | | | | |
|--------------------|------------------------------------------|-------|-------|-------|-------|
| | 20 | 40 | 60 | 80 | 100 |
| W/m ² K | 0,795 | 0,469 | 0,334 | 0,259 | 0,212 |

Valori di trasmittanza "U" redatti secondo UNI EN ISO 6946, UNI EN ISO 10211, UNI EN 14509.
The "U" value has been calculated following UNI EN ISO 6946, UNI EN ISO 10211, UNI EN 14509

SEZIONE A - A



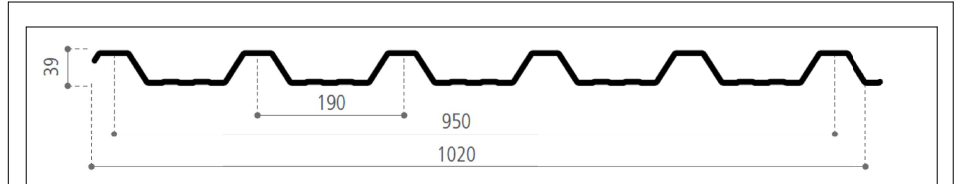
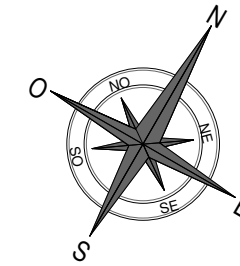
PIANTA COPERTURA



FOTOGRAFIA 1

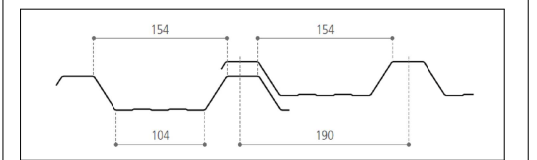


FOTOGRAFIA 2

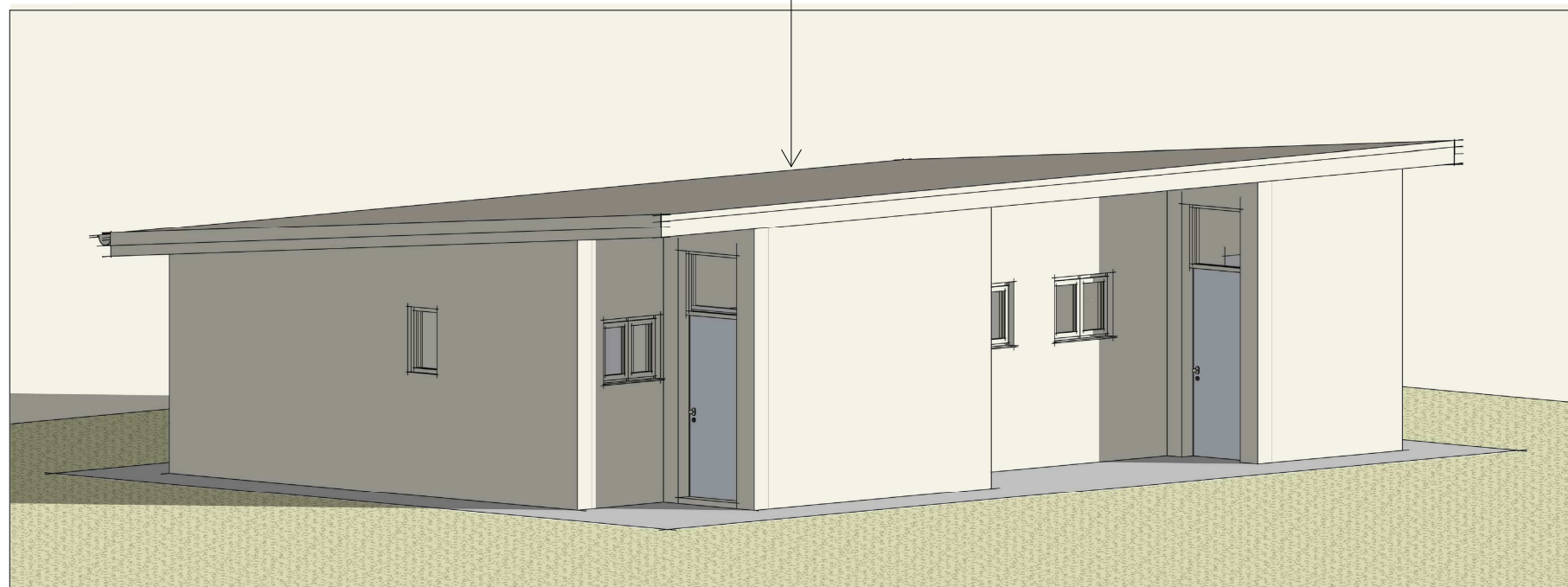


Caratteristiche tecniche alluminio

| s | p | J | W | EJ | M max |
|------|----------------------|----------------------|----------------------|-------------------------|-----------|
| [mm] | [kg/m ²] | [cm ² /m] | [cm ² /m] | [kN cm ² /m] | [kN cm/m] |
| 0,6 | 1,99 | 17,61 | 6,21 | 123.270 | 40 |
| 0,7 | 2,32 | 20,55 | 7,21 | 143.850 | 47 |
| 0,8 | 2,65 | 23,49 | 8,21 | 164.430 | 53 |
| 1,0 | 3,31 | 29,36 | 10,18 | 205.520 | 66 |

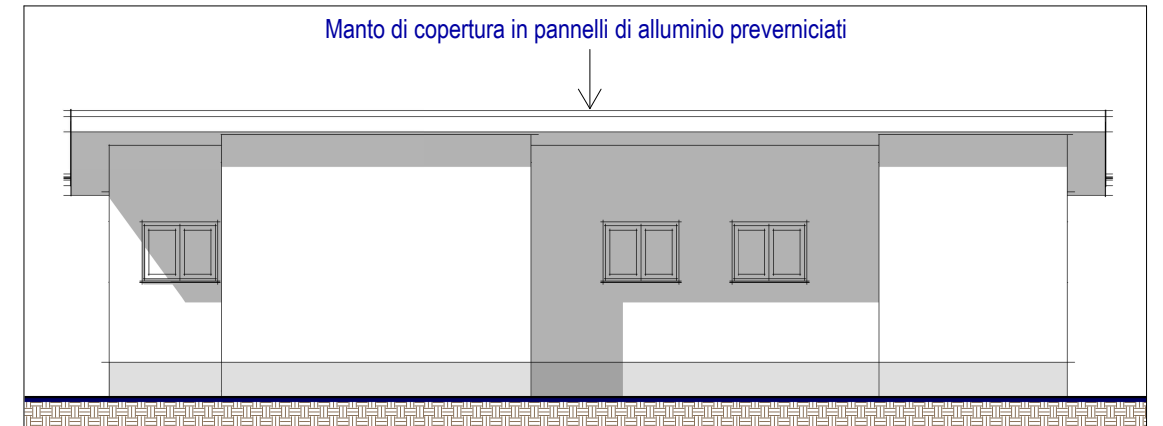


VISTA PROSPETTICA



PROSPETTO NORD

Manto di copertura in pannelli di alluminio preverniciati



SEZIONE A - A

Rifacimento manto di copertura da realizzare con pannelli in alluminio preverniciato colore Rosso Siena

